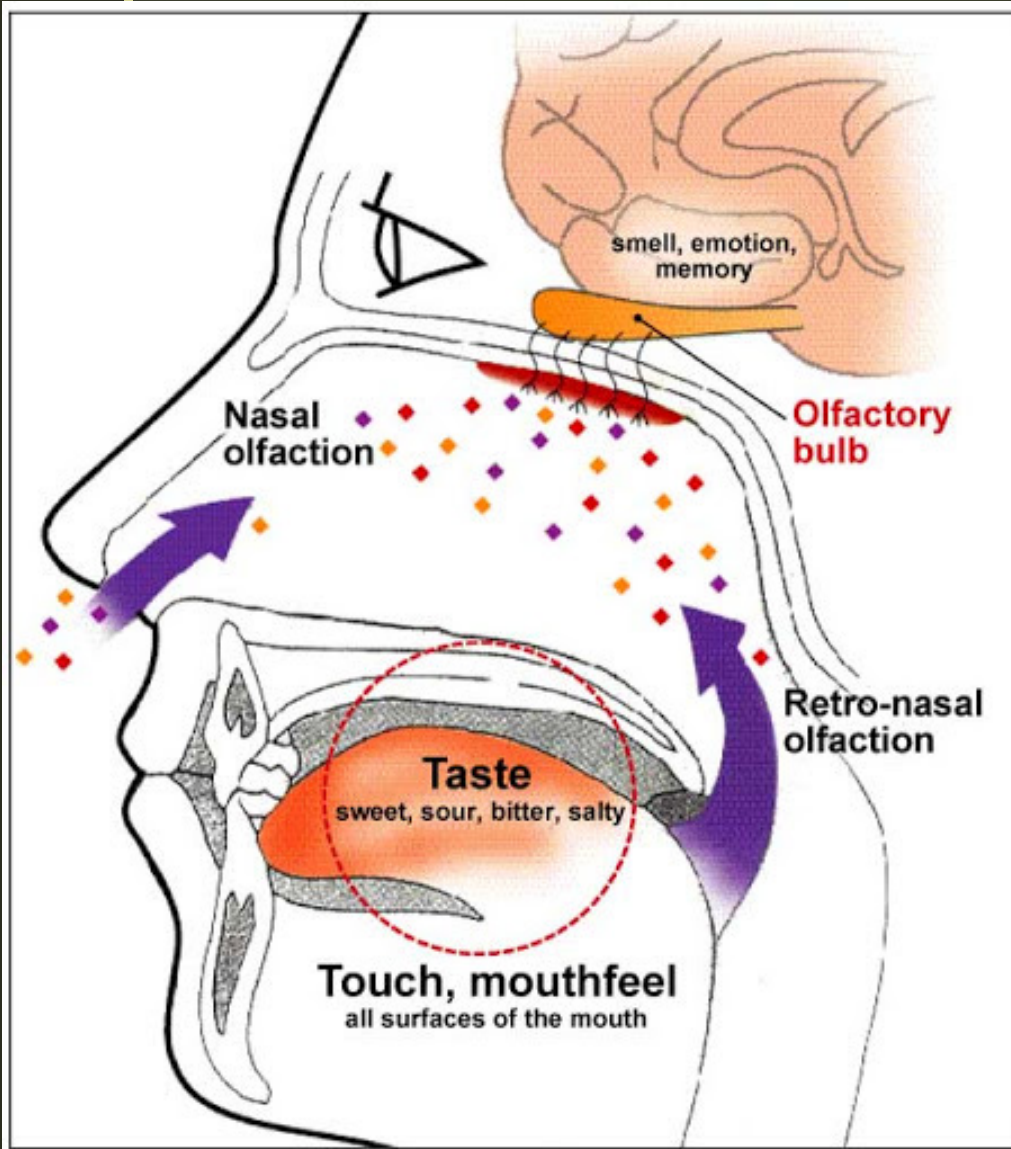




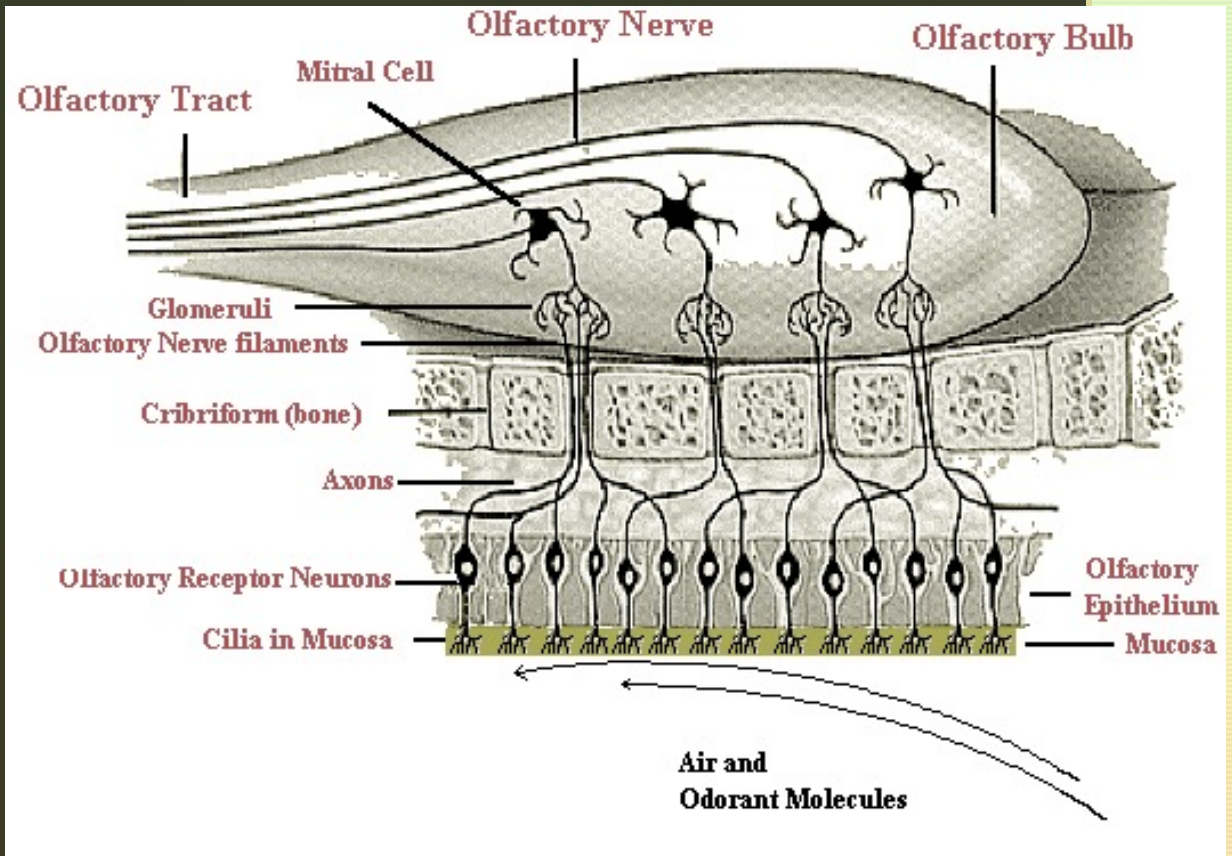
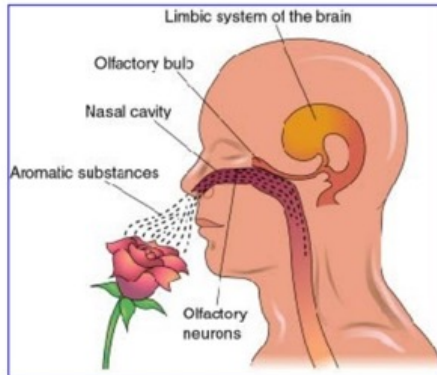
BOURGOGNE AND WILLAMETTE VALLEY
DIFFERENCES AND SIMILARITIES
CLASS TWO
JANUARY 22, 2024





The olfactory
cortex stores
olfactory
memories

THE SENSE OF SMELL



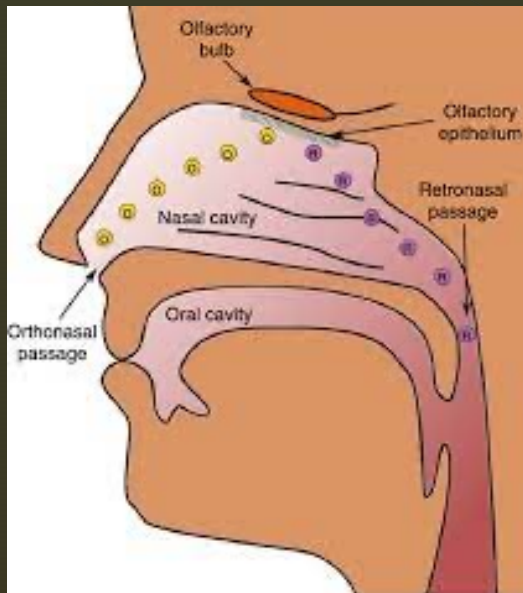
Most odors are **NOT** defined in our brain

- Odor patterns come from **memory events**
- You can increase memory of aromas BY SMELLING EVERYTHING!

FIVE primary tastes:

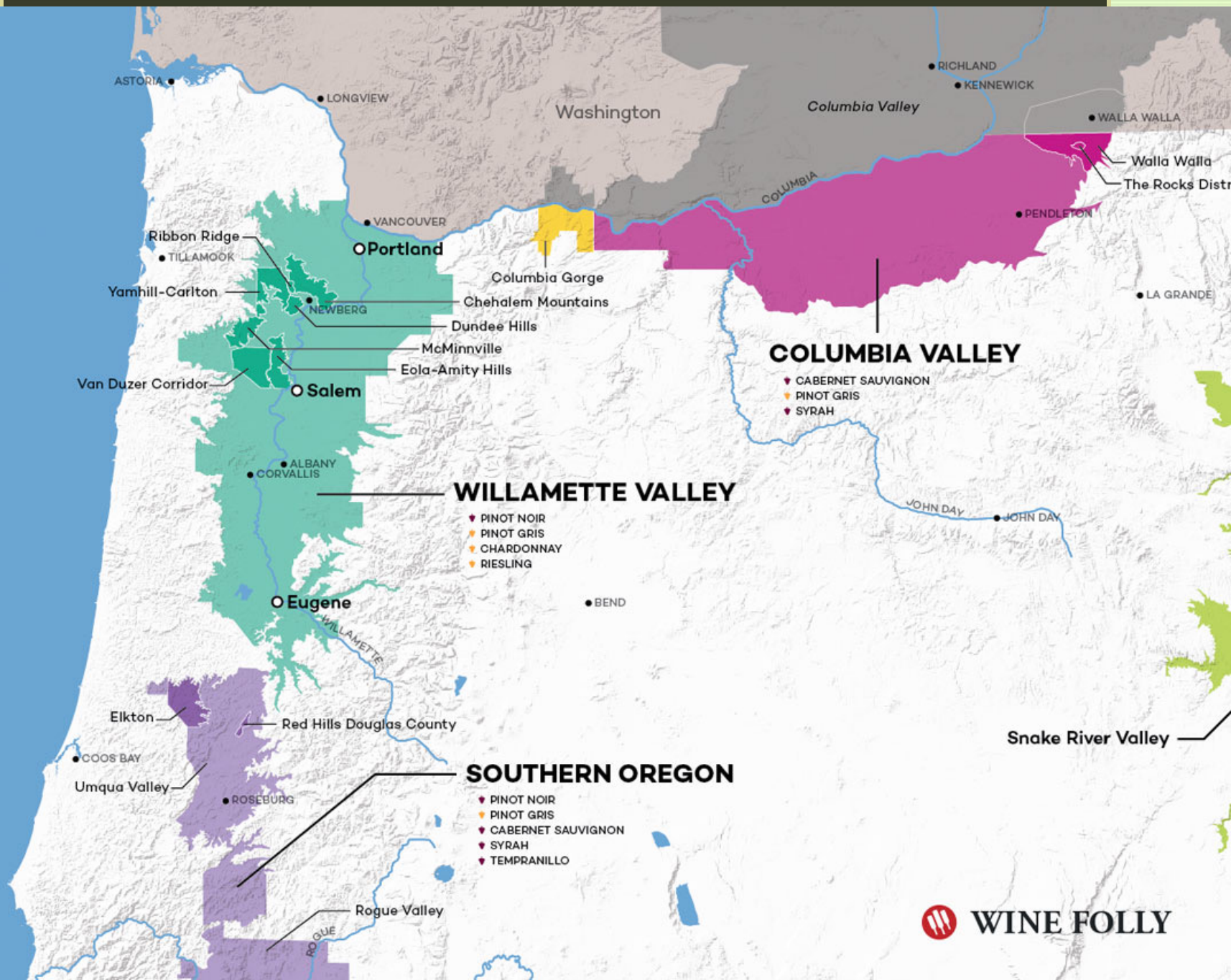
- ACID (SOUR)
- SWEET (RS/Alcohol)
- BITTER (Astringency feel)
- SALT (Salinity-Minerality)
- UMAMI (Savory)

- Acid – mouth watering/salivation
- Sweet – feels rich and heavy, alcohol has sweetness
- Bitter/Tannins - bitter is a taste, astringency a feeling
 - Palate dries and feels dusty and constricted
- Salty – comes across as saline/salinity
- Umami - savory and sensations of MSG



Everyone is different in what and how they experience flavors:

- Cultural
- Biological
- Age and experiences in life

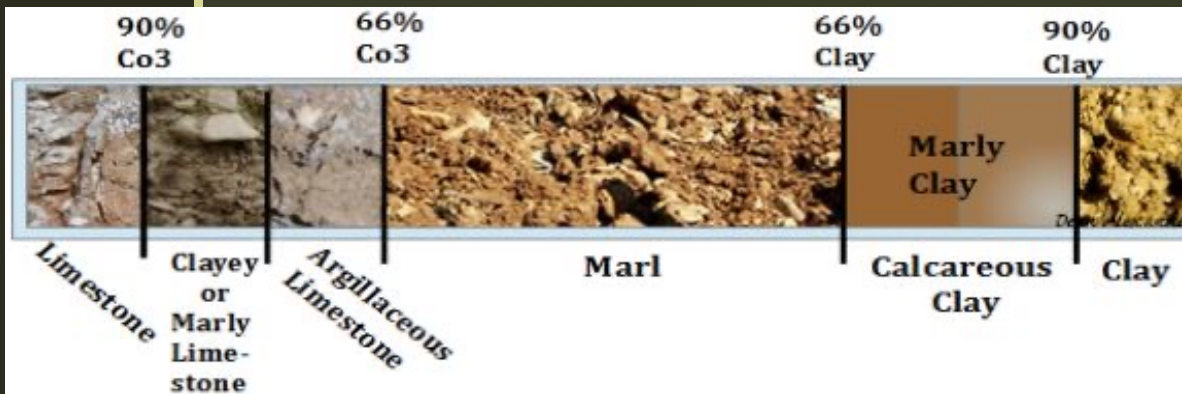


M A R I T I M E

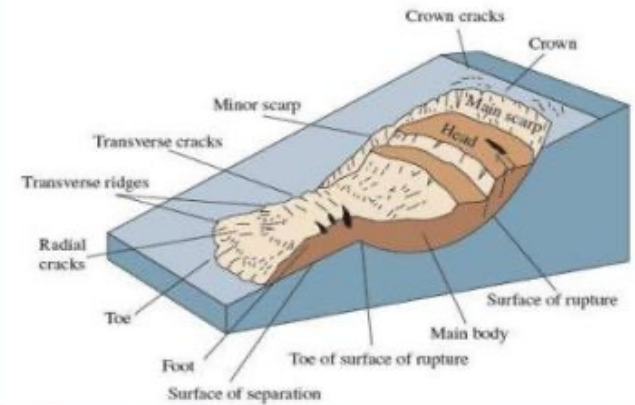
- Proximity to a large body of water
 - Water currents moderate temperatures
- Generally, a long growing season
- Rain and humidity potential problems
- Warm summers/cool winters
- Other regions: New Zealand, Bordeaux, Rias Baixas



SOILS OF WILLAMETTE VALLEY



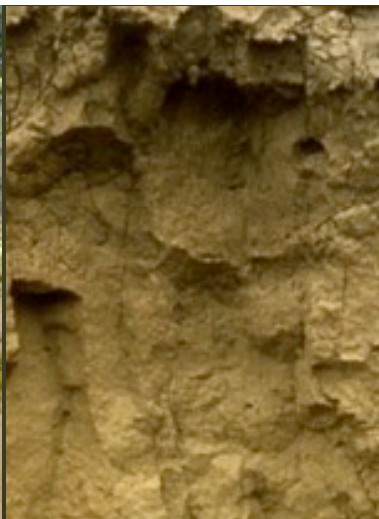
Appendix 4 – General Landslide Morphology and Terminology



Volcanic Basalts



Marine Sediments



Ice Age Loess



ENGLISH CHANNEL

FRENCH VINEYARDS

814,882

65% red
35% white

TOP GRAPE VARIETIES

(% of total vineyard area)

- | | |
|----------------------------|------------------------|
| 1. Merlot 14.7% | 11. Gamay 5.2% |
| 2. Grenache 10.5% | 12. Cabernet 2.4% |
| 3. Ugni Blanc 10.4% | 13. Pinot Meunier 1.3% |
| 4. Syrah 8.7% | 14. Semillon 1.3% |
| 5. Cabernet Sauvignon 6.7% | 15. Malbec 1.3% |
| 6. Chardonnay 6.2% | 16. Chenin Blanc 1.2% |
| 7. Carignan 4.6% | 17. Colombard 1.2% |
| 8. Cabernet Franc 4.3% | 18. Mourvèdre 1.2% |
| 9. Pinot Noir 4.0% | 19. Muscat Blanc 1.0% |
| 10. Sauvignon Blanc 3.7% | 20. Malbec 0.8% |

Source: Union of Vineyard 2016

WINE REGIONS of FRANCE

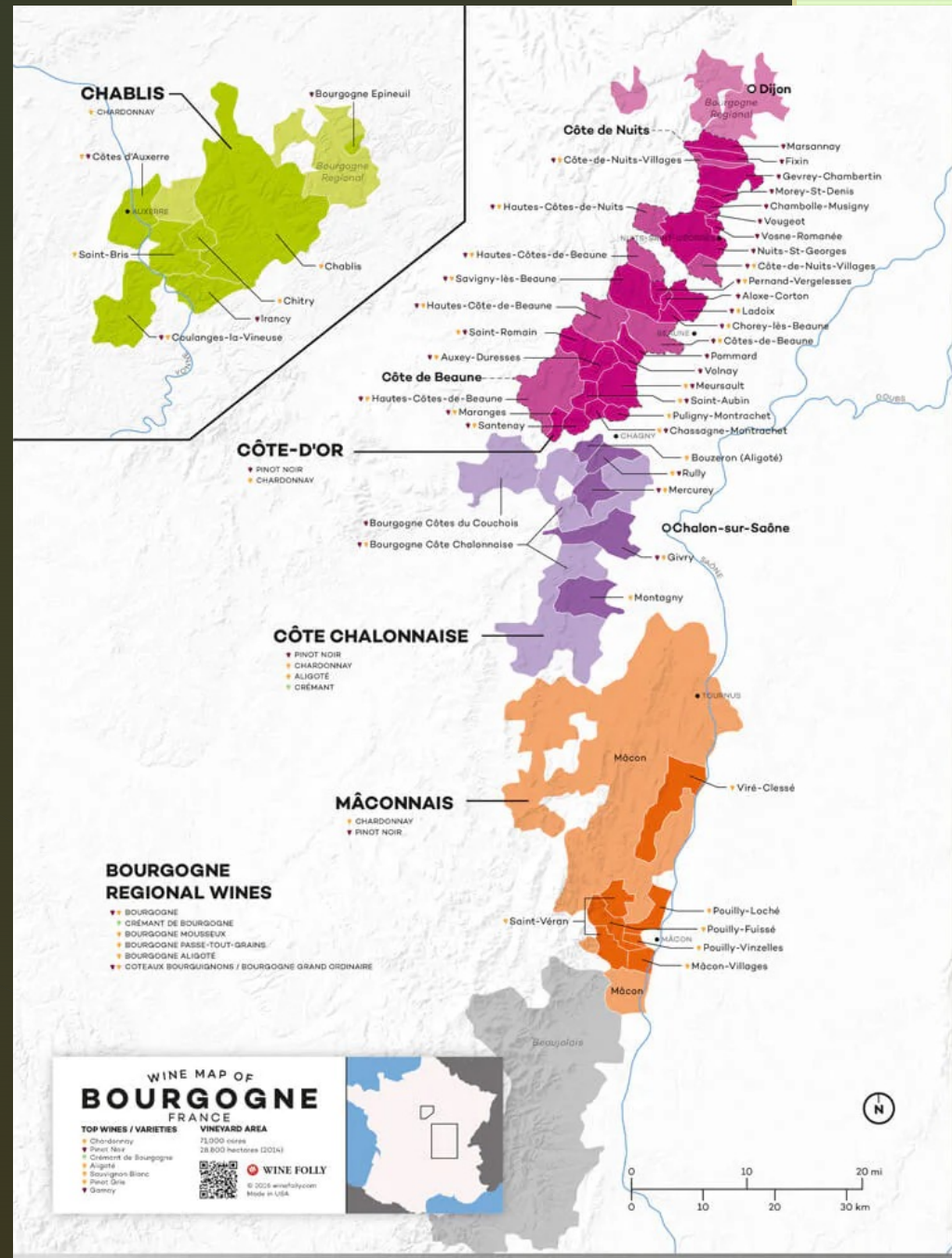


DE LONG x Vi

© 2016 Long x Vi and its publishing partners. All rights reserved. No part of this publication may be reproduced without prior written permission.

LANGUEDOC-ROUSSILLON 241,564 sq km
70% white Chardonnay, Sauvignon Blanc, Pinot Blanc
30% red Syrah, Grenache Noir, Carignan, Cabernet Sauvignon, Cinsault

- No significant body of water influencing
- Extreme temperature variation between seasons - diurnal
- Frost and hail potential problems
- Other regions: Columbia Valley, Rioja, Champagne



Bourgogne has more appellations (AOC) than any other French wine region

7 Regional AOCs

44 village AOCs with 662 Premiers Crus among them

33 Grands Crus AOCs

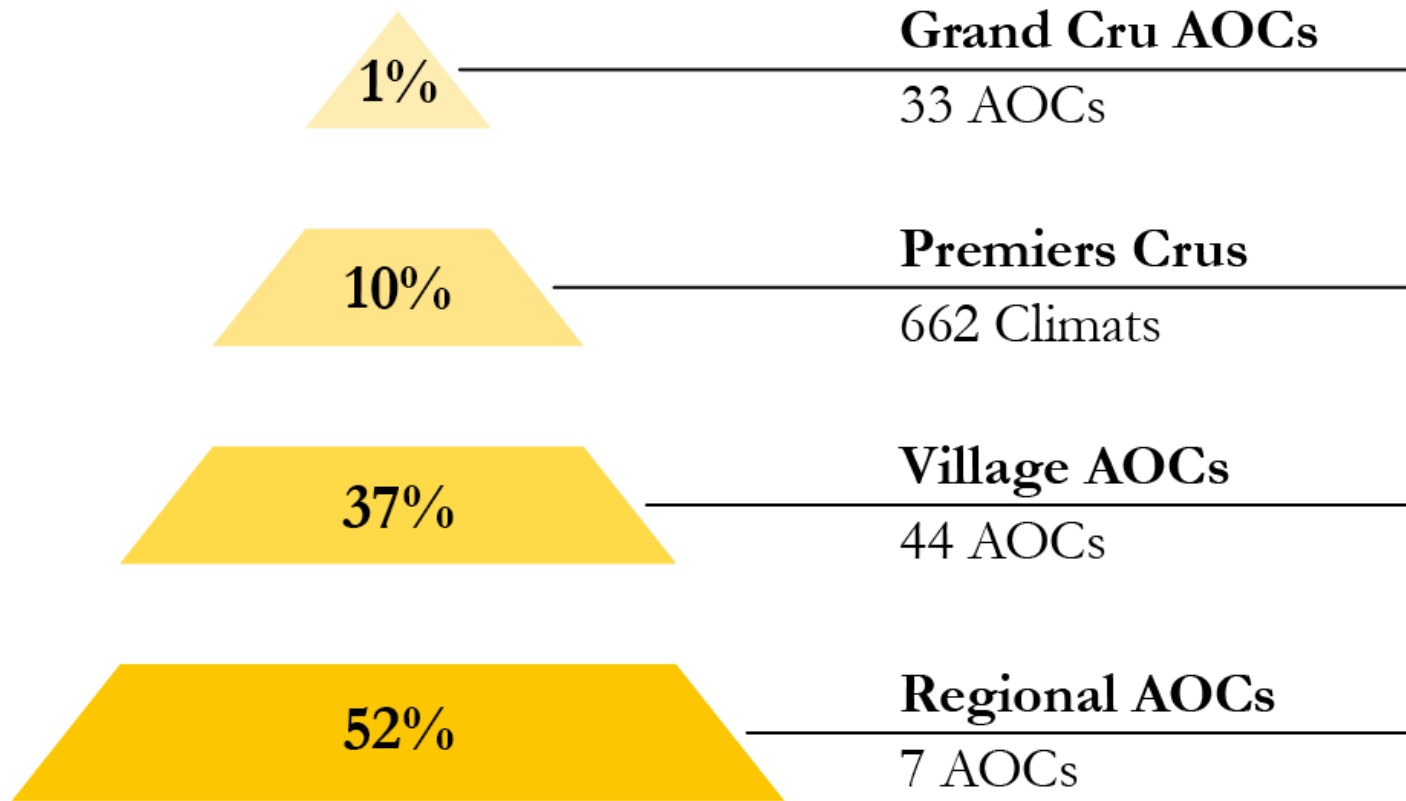
Unranked parcels (lieux-dits)

And... most vineyards have multiple owners

Located in Eastern France

Runs ~140 mi/224 km north to south

Wine Quality Pyramid



BIVB 2020

GEOLOGY & SOILS

Topography

Top slope = thinnest
topsoil/least
absorption

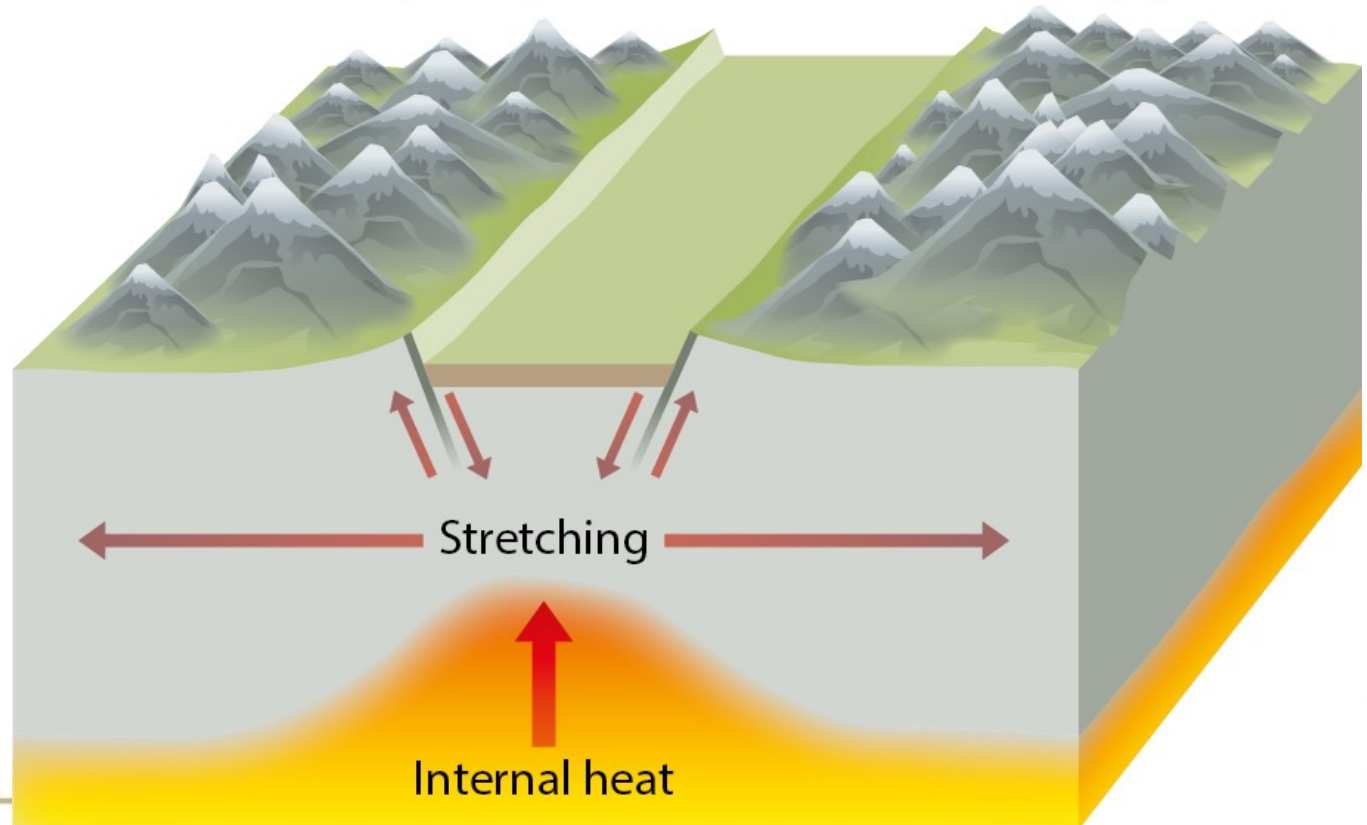
Mid-slope =
moderate
topsoil/adequate
absorption

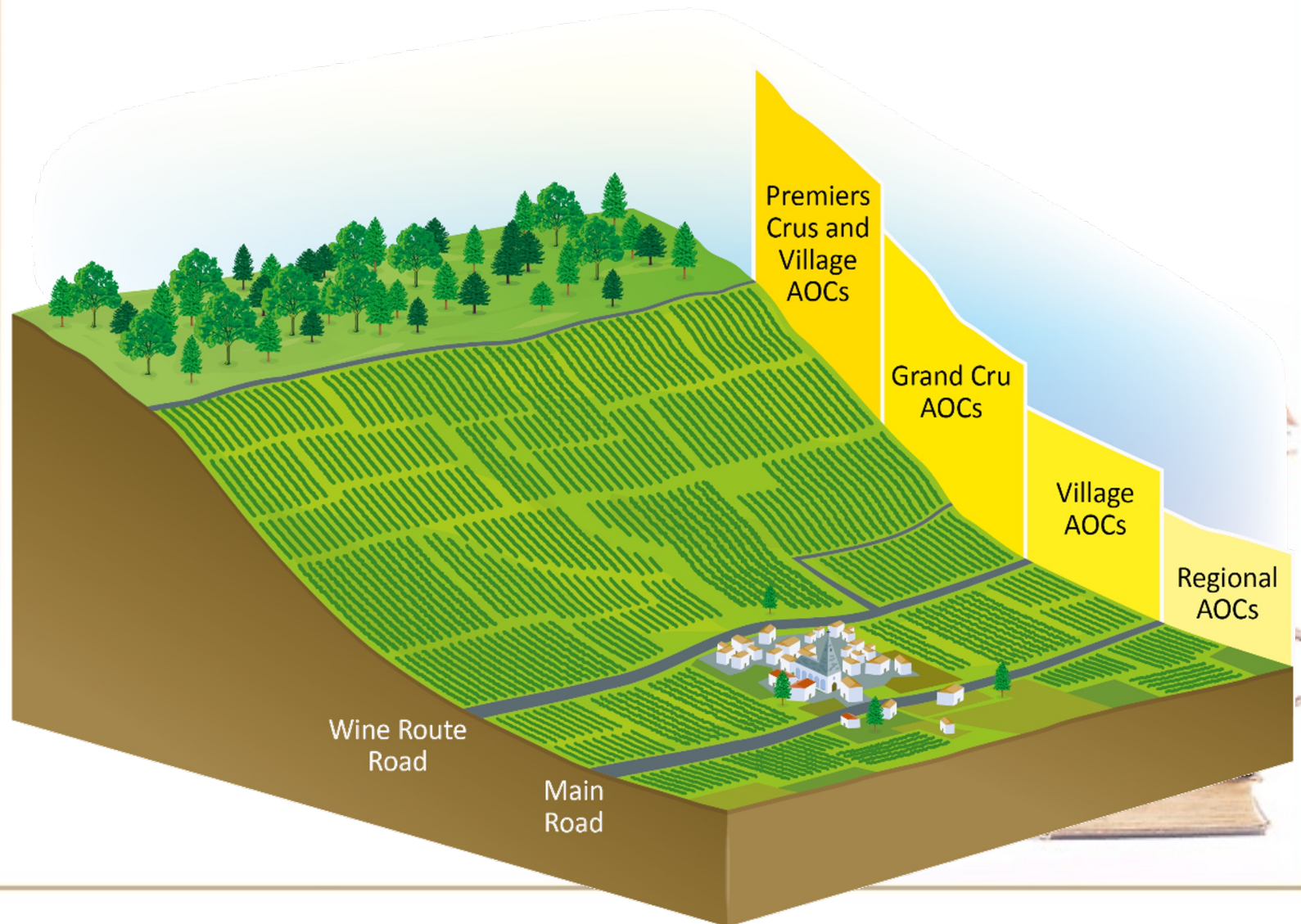
Bottom slope =
deepest
soils/water-
saturated

Saône Graben

Morvan Uplands at
2,956 ft/901 m

Jura Mountains at
5,643/1,720 m





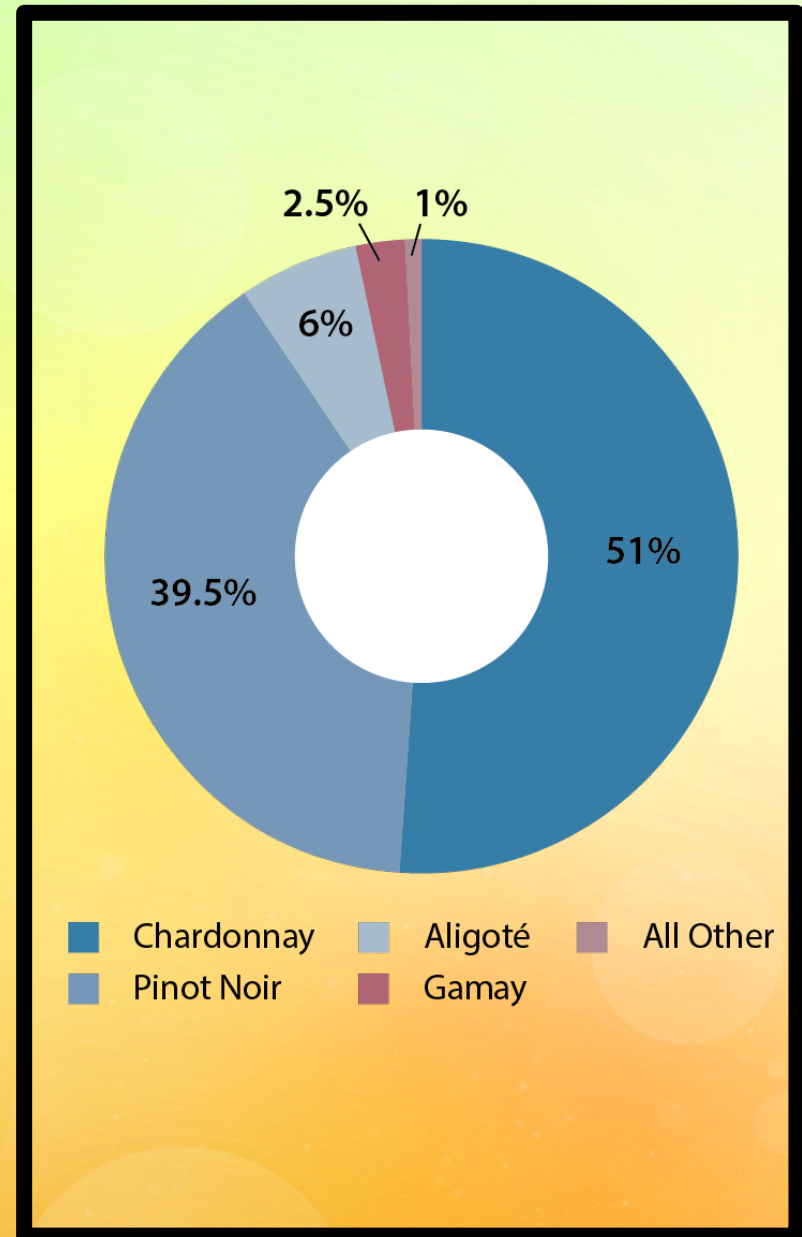




WHAT GRAPES ARE GROWN IN BOURGOGNE?

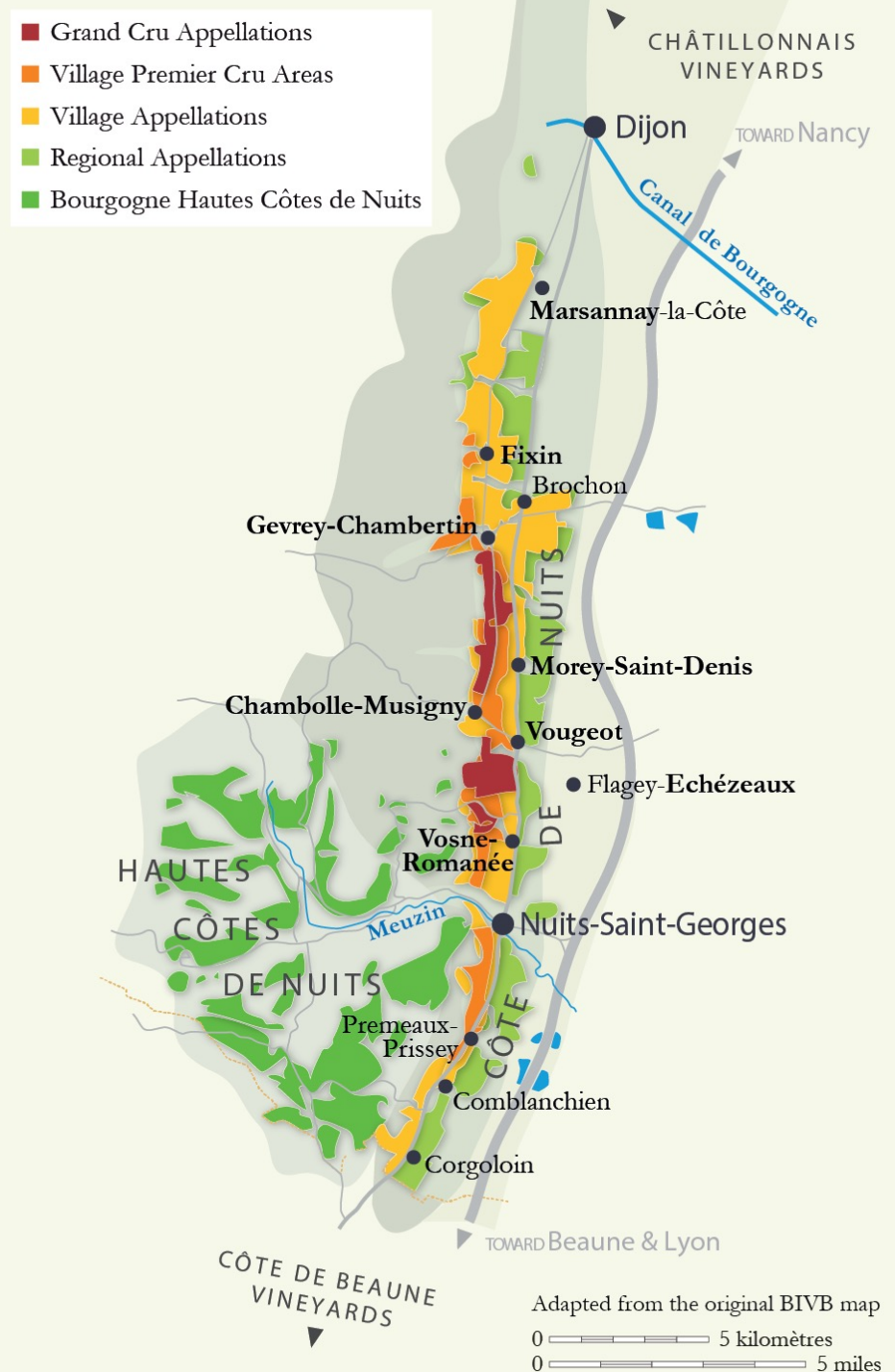
- Chardonnay
- Pinot Noir
- Aligoté
- Sacy
- Pinot Blanc
- Pinot Gris
- Sauvignon Blanc
- Melon
- César
- Gamay

- White Grapes
 - Chardonnay
 - Aligoté
 - Sauvignon Blanc
 - Pinot Blanc
 - Sacy
 - Melon de Bourgogne
- Rose/Gris Grapes
 - Pinot Gris
 - Sauvignon Gris
- Red Grapes
 - Pinot Noir
 - Gamay
 - César



Côte de Nuits

- Northern half of Côte d'Or ("Golden Slope")
- Vineyards at 720-1,150 ft/220-350 m
- Most vineyards face east
- Production almost entirely red
 - Pinot Noir



Côte de Nuits

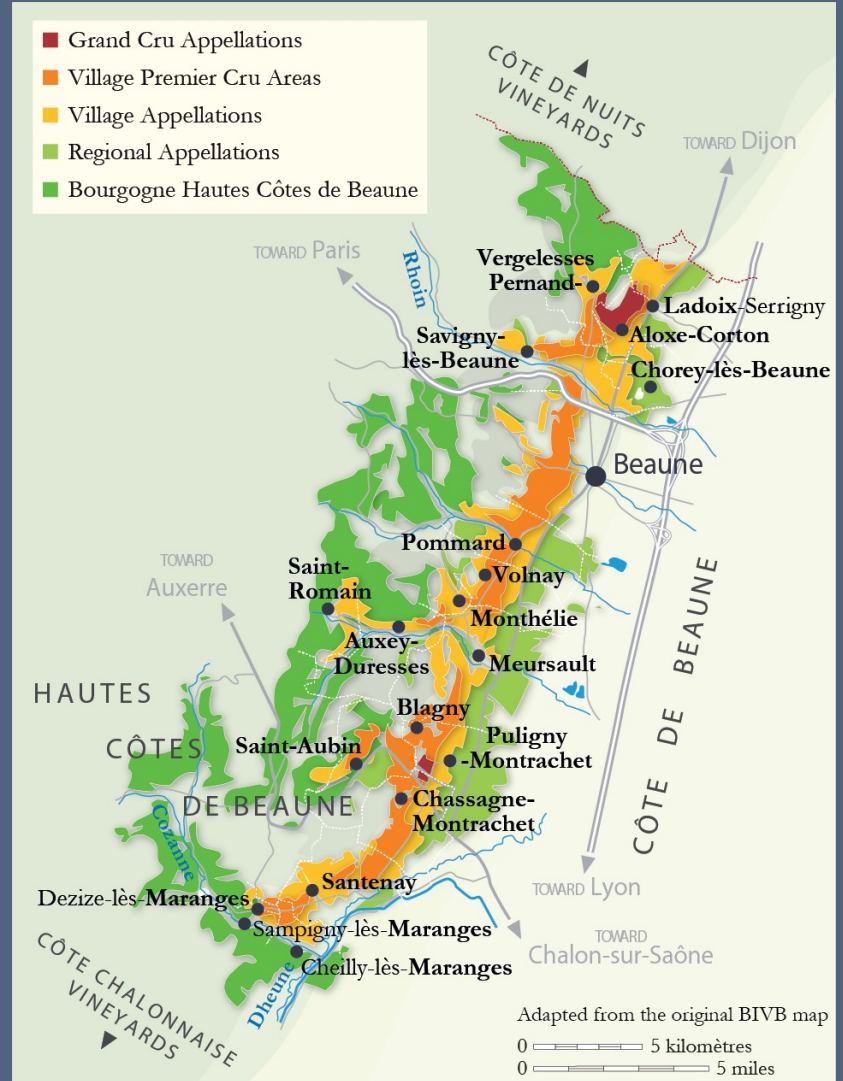
- Marsannay
- Fixin
- Gevrey-Chambertin
- Morey-Saint-Denis
- Chambolle-Musigny
- Vougeot
- Vosne-Romanée
- Nuits-Saint-Georges





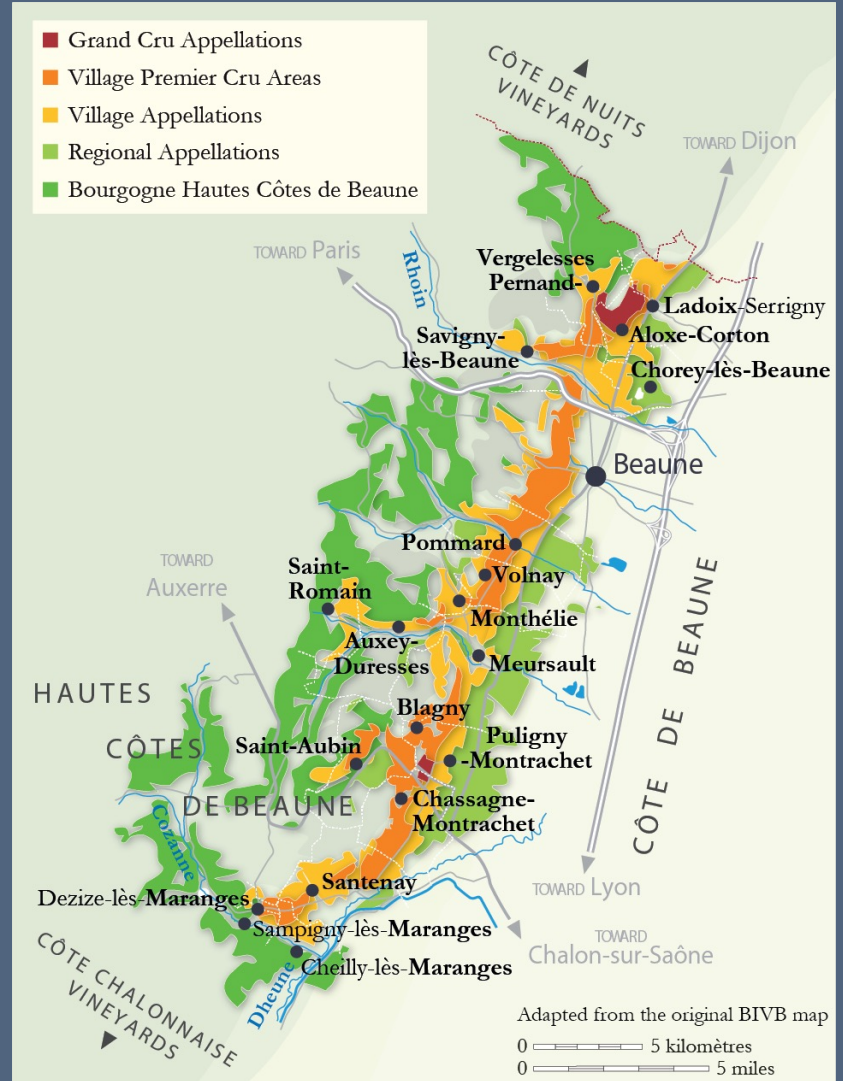
Côte de Beaune

- Vineyards at 720-1,150 ft/220-350 m
- SE-facing
- Escarpment is less steep and more broken than CdN
- Production is approximately 2/3 red and 1/3 white



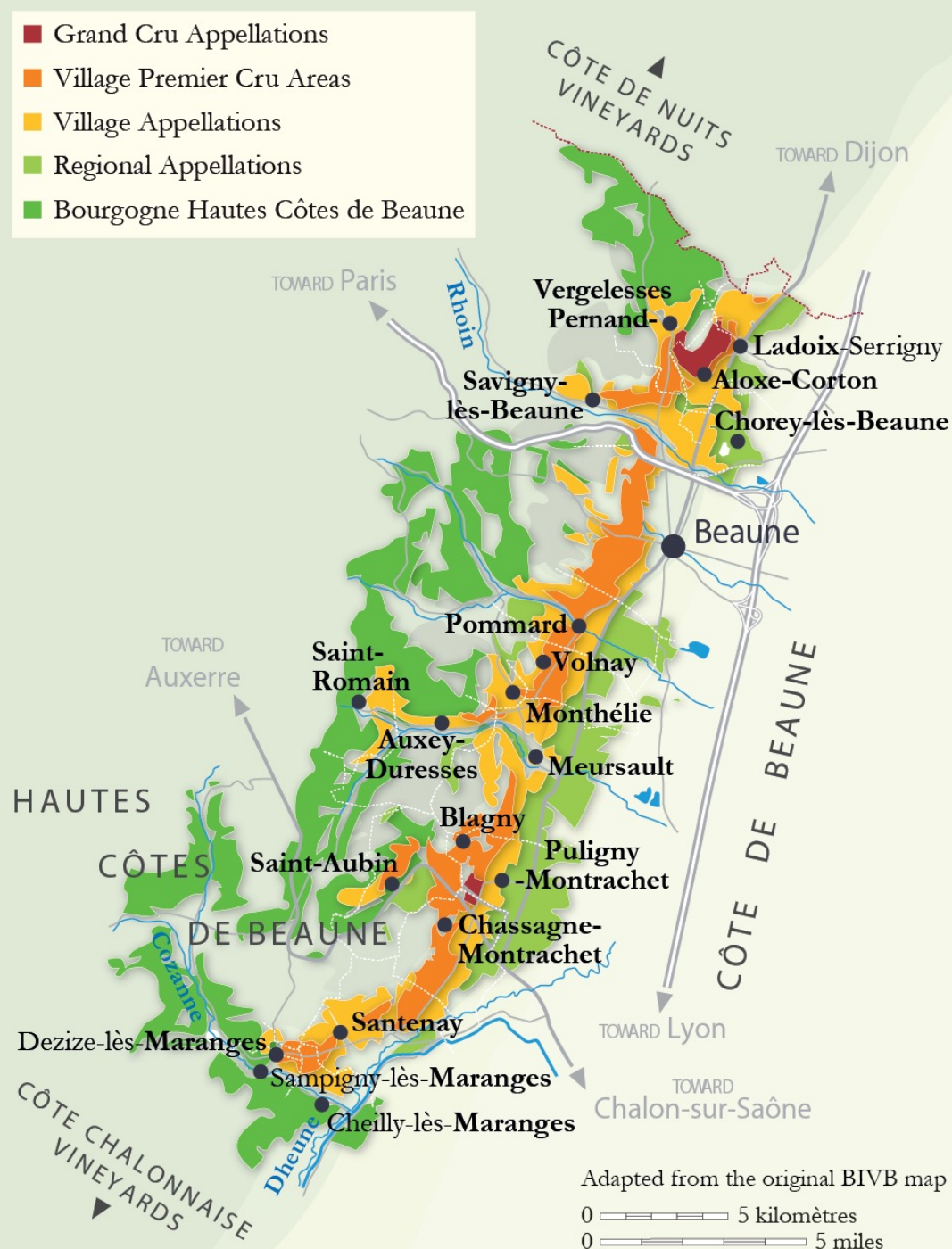
Côte de Beaune

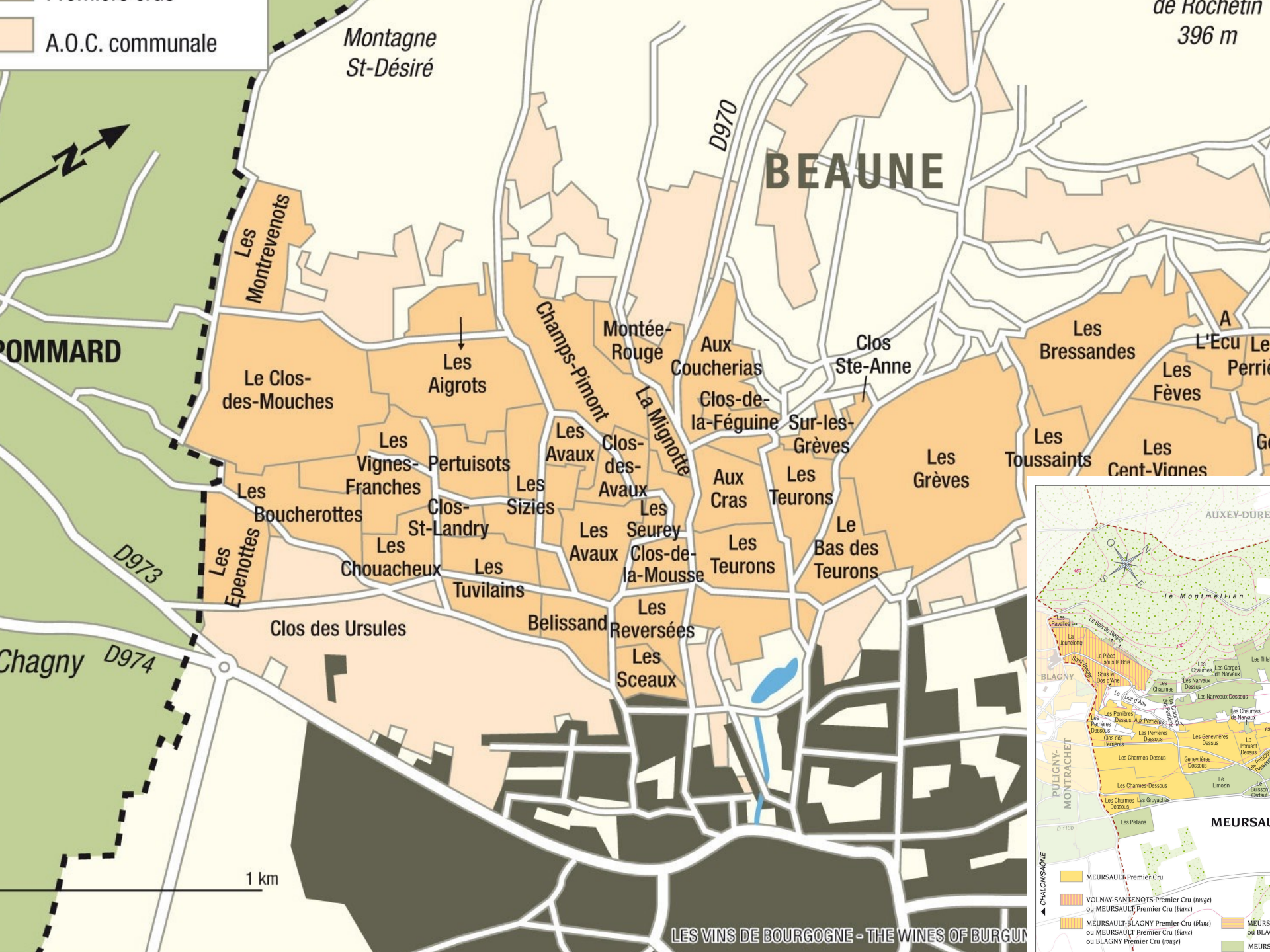
- Ladoix
- Aloxe-Corton
- Pernand-Vergeles
- Chorey-lès-Beaune
- Savigny-lès-Beaune
- Beaune
- Pommard
- Volnay



Côte de Beaune

- Monthélie
- Saint-Romain
- Auxey-Duresses
- Saint-Aubin
- Meursault
- Puligny-Montrachet
- Chassagne-Montrachet
- Santenay
- Maranges



[illegible][illegible]

THANK YOU, PLEASE REACH OUT WITH
QUESTIONS, COMMENTS OF INQUIRIES



<https://www.reggiwine.com>
Reggiwine@icloud.com
206 229-4790