



Danube River Cruise
April 2-9, 2026

DANUBE

ZenWine
wine & wellness



REGGIE
W I N E

Vilshofen to Budapest



The river cruise starts on **April 2, 2026** in the beautiful town of **Vilshofen** in Germany and travels east on the Danube River through vineyards

Germany, Austria, and Hungary wine region, charming villages, historical sites and excursions explored.

The cruise ends in the vibrant and historic city of **Budapest** on **April 9, 2026**.





WINE
LOVERS
CRUISE

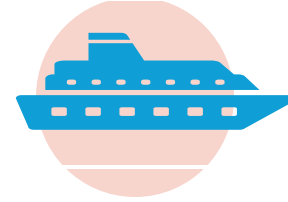
SHIP: Impression	CABINS	Danube Dreams Eastbound			BEGINS: Vilshofen April 2, 2026 ENDS: Budapest April 9, 2026		
Category	Category Description	Deck	BASE Fare	UPGRADE	Group DISCOUNT	Group OFFERING	<u>Group Fare Per Person</u>
E	Stateroom 172 sq. ft	1	\$3,630.	0	-\$1,500.	Gratuities included	\$2,130.00
D	Stateroom 172 sq. ft	1	\$3,630.	0	-\$1,500.	Gratuities included	\$2,130.00
P	Stateroom 200 sq. ft	3	\$3,630.	\$1,799.	-\$1,500.	Gratuities included	\$3,929.00
B	Stateroom 200 sq. ft	2	\$3,630.	\$1,649.	-\$1,500.	Gratuities included	\$3,779.00
A	Stateroom 200 sq. ft	2/3	\$3,630.	\$1,749.	-\$1,500.	Gratuities included	\$3,879.00
S	Suite 300 sq. ft.	3	\$3,630.	\$2,999.	-\$1,500.	Gratuities included	\$5,129.00



Fares start at
\$2130. per person



You can also choose to
book the flights into other
cities and transfer to the
boat.



AVALON Waterways
includes excursions, beer,
wine, cocktails and all
meals



Fine dining,
complimentary
beverages, excursions,
onboard Wi-Fi, luggage
handling, port charges,
tips and taxes are all
included. With no
hidden extras.



AVALON accommodates special dietary
requirements. If you have special dietary
requests, please notify us at the time of
booking and inform your Cruise Director
when you arrive.



More Amenities

- Complimentary Starlink Wi-Fi
- Panoramic windows throughout the ship
- Elegant, contemporary design & decor
- Friendly, English-speaking crew & Cruise Director
- Sky Deck with whirlpool, shade awnings, game area and premium lounges
- Covered Observation Lounge
- Club Lounge with 24-hour self-serve beverage station with complimentary cappuccinos, lattes, tea, hot chocolate & premium coffees, as well as treats throughout the day
- Elevator
- Non-smoking interior and staterooms



- Chef-prepared onboard meals with regional cuisine and familiar favorites
- Seasonal cuisine featuring the freshest local ingredients
- Avalon Fresh® healthy cuisine options at every meal
- Spacious, open-seating Panorama Dining Room
- Daily breakfast buffet with full range of classic breakfast items, healthy Avalon Fresh® options and daily a la carte specials
- Complimentary room service for Continental breakfast, lunch, and dinner
- Daily lunch buffet featuring regional specialties, classic dishes, healthy Avalon Fresh® options and rotating chef's features including carving & pasta stations. Alternatively, you may dine al fresco at our Sky Grill on the Sky Deck (weather and itinerary permitting) or enjoy a light lunch in the Panorama Lounge.
- Afternoon Tea featuring tea, coffee, and sweet treats
- Four-course dinners with choice of appetizers, soups, salads, entrées and desserts or cheese
- Linger over several selections from the Panorama Bistro's tasting menu for a less formal "sit-down" atmosphere
- Complimentary wine, beer, or soft drinks with lunch and dinner
- Avalon FlexDining® flexible dining times with menu & venue options
- Vegetarian options at every meal, as well as vegan, low calorie, low fat, high fiber, low cholesterol, high energy and allergy-free selections
- Panorama Lounge & Bar with premium spirits, cozy seating, panoramic windows & dance floor
- Welcome & farewell cocktails with sparkling wine & canapés
- Included Happy Hour every evening featuring house beer, wine, cocktails and a drink of the day
- Cocktails with a view on the Sky Deck
- Specialty coffees, espresso drinks and beWell Essence flavored and infused water available throughout each day

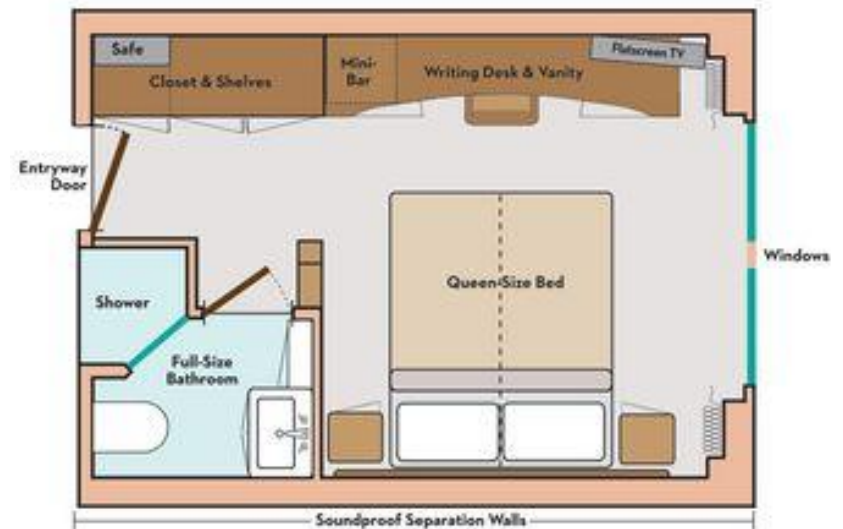


Fitness & Wellness

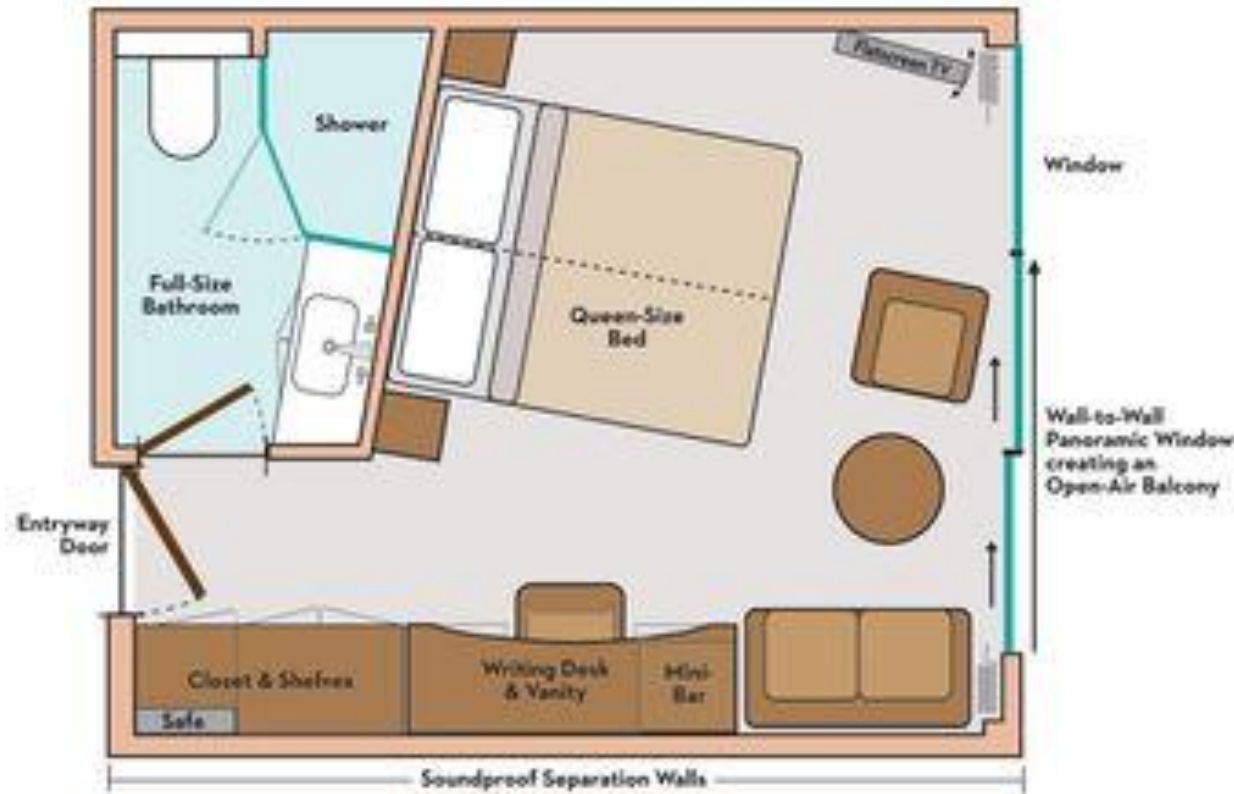
- Active shore excursions, both included and optional
- Fitness Center
- Avalon Adventure Center
Your place for active gear* and activities through your Avalon Adventure HostSM, including:
 - Bikes
 - Maps for hiking, biking and jogging routes
 - Canoe and kayak excursions
 - Fitbits[®]
 - Walking Sticks
 - Binoculars
 - Daypacks
 - Yoga Mats
 - Fitness bands
- Personal-use bikes and watercraft

Suites & Staterooms 172 square feet

- Open-Air Balconies® and Wall-to-Wall Panoramic Windows in all Panorama SuitesSM
- Comfort Collection BedsSM with choice of mattress firmness
- Egyptian super-combed cotton linens
- Bathrobes & slippers
- Premium L'Occitane® bath products & hairdryer
- Large bathroom featuring shower with glass door
- Wide selection of free movie channels and English-speaking TV
- Individual climate control and in-room safe
- Full-size closet and mirror
- Additional under-bed storage
- Well-stocked mini-bar

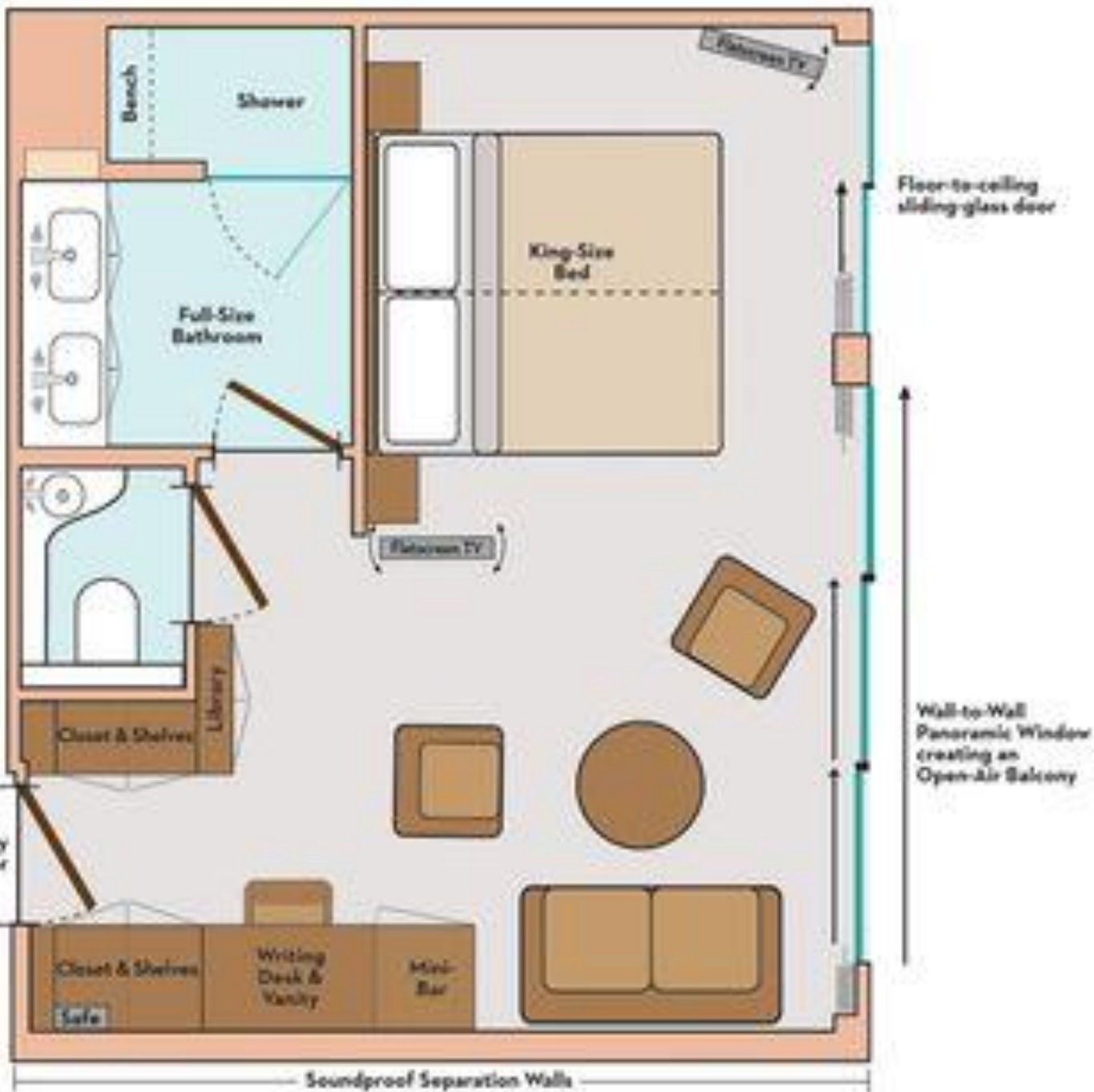


Panorama Suites 200 square feet



Royal Suites





Royal Suites

300 square feet

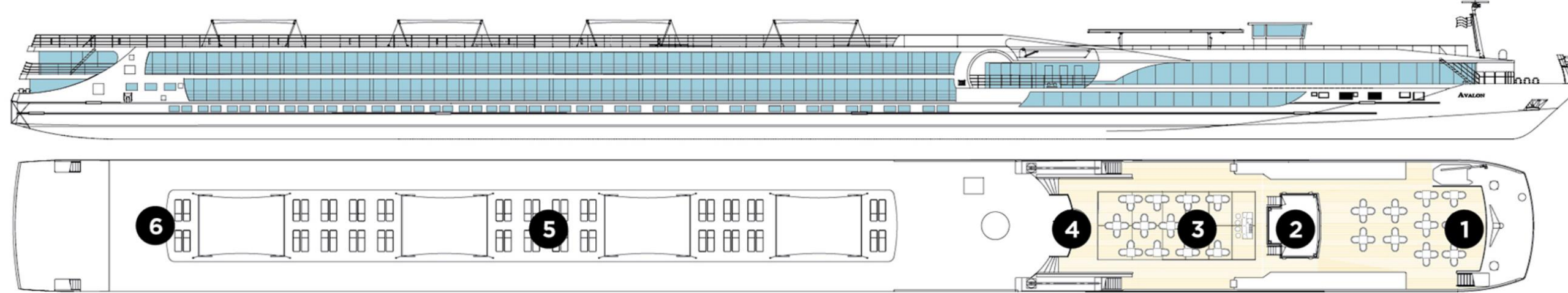
Suites & Staterooms

Comfort Collection Beds
Luxurious mattress toppers
Egyptian super-combed cotton linens
European-style duvets
Soft & firm pillows
Extra blankets
Choice of bed configuration
Nightly turn-down service
Bedside tables with reading lamps
Premium hairdryer
L'Occitane bath products

Spacious 3-door closets with shelves for ample storage
Easy under-bed luggage storage
Flatscreen satellite TV with English-speaking channels & over 50 free movie options
Alarm clock
Direct-dial telephone
Bathrobes & slippers
Well-stocked minibar
Complimentary filtered water
In-room safe

Individual climate control
Elegant, contemporary design
Large mirror in bathroom
Two windows
Full shower with glass door
Writing desk and chair
Lighted makeup mirror
Complimentary Wi-Fi
One Queen-Sized Bed or Two Twins
USB Ports





DECK PLAN

- | | | |
|-------------------------------|----------------------|-------------------|
| 1 Sky Lounge | 7 Observation Lounge | 13 Lobby |
| 2 Navigation Bridge | 8 Panorama Bistro | 14 Elevator |
| 3 Sky Grill | 9 Panorama Lounge | 15 Club Lounge |
| 4 Whirlpool
Premium Lounge | 10 Bar | 16 Galley |
| 5 Chairs And Shade
Awnings | 11 Reception | 17 Dining Room |
| 6 Deck Game Area | 12 Adventure Center | 18 Fitness Center |

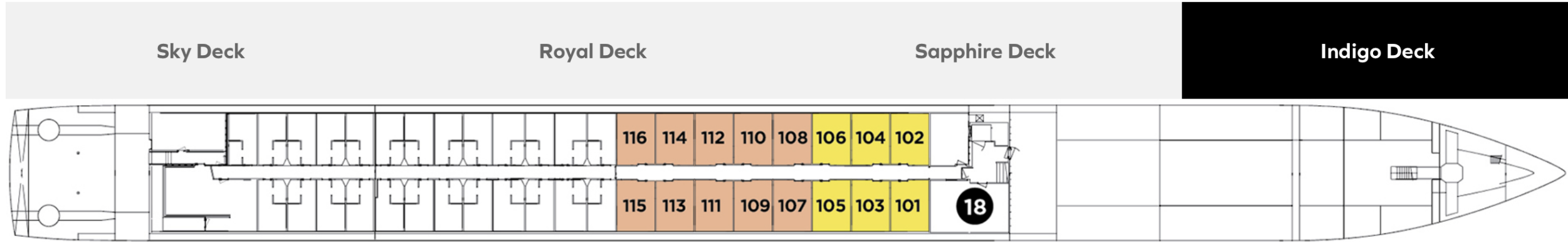
CATEGORIES

- | | |
|--------------------|---|
| Royal Suite | Royal Deck Royal Suites |
| Cat. P | Royal Deck Panorama Suites |
| Cat. A | Sapphire Deck Forward Panorama Suites |
| Cat. B | Sapphire Deck Aft Panorama Suites |
| Cat. D | Indigo Deck Aft Deluxe Staterooms |
| Cat. E | Indigo Deck Forward Deluxe Staterooms |

STATEROOMS 16 ~ SUITES 67 ~ LENGTH 443ft ~ CREW 47

SHIP: Impression	CABINS	Danube Dreams Eastbound			BEGINS: Vilshofen April 2, 2026 ENDS: Budapest April 9, 2026		
Category	Category Description	Deck	BASE Fare	UPGRADE	Group DISCOUNT	Group OFFERING	<u>Group Fare Per Person</u>
E	Stateroom 172 sq. ft	1	\$3,630.	0	-\$1,500.	Gratuities included	\$2,130.00
D	Stateroom 172 sq. ft	1	\$3,630.	0	-\$1,500.	Gratuities included	\$2,130.00
P	Stateroom 200 sq. ft	3	\$3,630.	\$1,799.	-\$1,500.	Gratuities included	\$3,929.00
B	Stateroom 200 sq. ft	2	\$3,630.	\$1,649.	-\$1,500.	Gratuities included	\$3,779.00
A	Stateroom 200 sq. ft	2/3	\$3,630.	\$1,749.	-\$1,500.	Gratuities included	\$3,879.00
S	Suite 300 sq. ft.	3	\$3,630.	\$2,999.	-\$1,500.	Gratuities included	\$5,129.00

STATEROOMS 16 ~ SUITES 67 ~ LENGTH 443ft ~ CREW 47



DECK PLAN

- | | | |
|---|----------------------|-------------------|
| 1 Sky Lounge | 7 Observation Lounge | 13 Lobby |
| 2 Navigation Bridge | 8 Panorama Bistro | 14 Elevator |
| 3 Sky Grill | 9 Panorama Lounge | 15 Club Lounge |
| 4 Whirlpool | 10 Bar | 16 Galley |
| 5 Premium Lounge
Chairs And Shade
Awnings | 11 Reception | 17 Dining Room |
| 6 Deck Game Area | 12 Adventure Center | 18 Fitness Center |

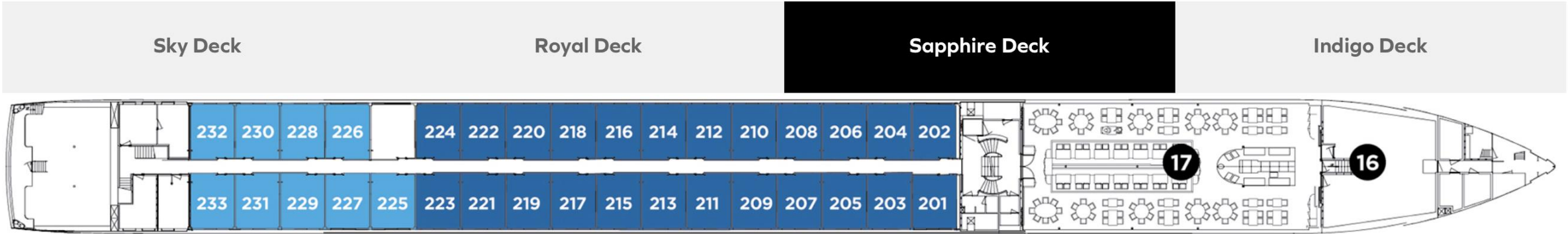
CATEGORIES

- Royal Suite** Royal Deck | Royal Suites
- Cat. P** Royal Deck | Panorama Suites
- Cat. A** Sapphire Deck Forward | Panorama Suites
- Cat. B** Sapphire Deck Aft | Panorama Suites
- Cat. D** Indigo Deck Aft | Deluxe Staterooms
- Cat. E** Indigo Deck Forward | Deluxe Staterooms



SHIP: Impression	CABINS	Danube Dreams Eastbound			BEGINS: Vilshofen April 2, 2026 ENDS: Budapest April 9, 2026		
Category	Category Description	Deck	BASE Fare	UPGRADE	Group DISCOUNT	Group OFFERING	<u>Group Fare Per Person</u>
E	Stateroom 172 sq. ft	1	\$3,630.	0	-\$1,500.	Gratuities included	\$2,130.00
D	Stateroom 172 sq. ft	1	\$3,630.	0	-\$1,500.	Gratuities included	\$2,130.00
P	Stateroom 200 sq. ft	3	\$3,630.	\$1,799.	-\$1,500.	Gratuities included	\$3,929.00
B	Stateroom 200 sq. ft	2	\$3,630.	\$1,649.	-\$1,500.	Gratuities included	\$3,779.00
A	Stateroom 200 sq. ft	2/3	\$3,630.	\$1,749.	-\$1,500.	Gratuities included	\$3,879.00
S	Suite 300 sq. ft.	3	\$3,630.	\$2,999.	-\$1,500.	Gratuities included	\$5,129.00

STATEROOMS 16 ~ SUITES 67 ~ LENGTH 443ft ~ CREW 47



DECK PLAN

- | | | |
|---|----------------------|-------------------|
| 1 Sky Lounge | 7 Observation Lounge | 13 Lobby |
| 2 Navigation Bridge | 8 Panorama Bistro | 14 Elevator |
| 3 Sky Grill | 9 Panorama Lounge | 15 Club Lounge |
| 4 Whirlpool | 10 Bar | 16 Galley |
| 5 Premium Lounge
Chairs And Shade
Awnings | 11 Reception | 17 Dining Room |
| 6 Deck Game Area | 12 Adventure Center | 18 Fitness Center |

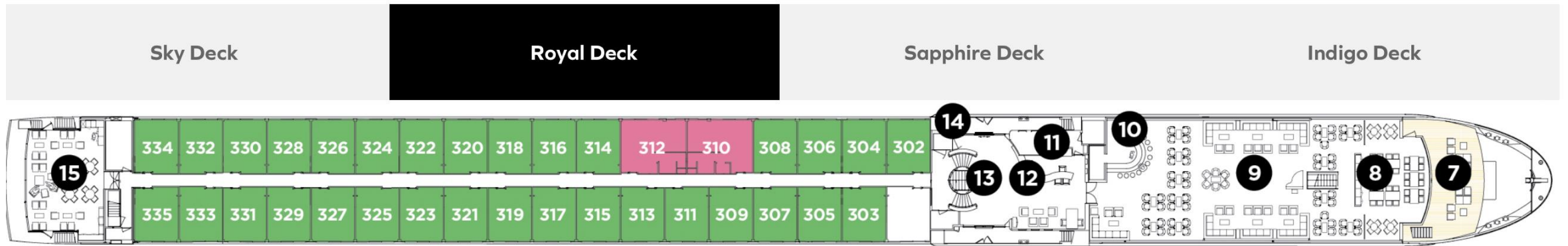
CATEGORIES

- | | |
|--------------------|---|
| Royal Suite | Royal Deck Royal Suites |
| Cat. P | Royal Deck Panorama Suites |
| Cat. A | Sapphire Deck Forward Panorama Suites |
| Cat. B | Sapphire Deck Aft Panorama Suites |
| Cat. D | Indigo Deck Aft Deluxe Staterooms |
| Cat. E | Indigo Deck Forward Deluxe Staterooms |



SHIP: Impression	CABINS	Danube Dreams Eastbound			BEGINS: Vilshofen April 2, 2026 ENDS: Budapest April 9, 2026		
Category	Category Description	Deck	BASE Fare	UPGRADE	Group DISCOUNT	Group OFFERING	<u>Group Fare Per Person</u>
E	Stateroom 172 sq. ft	1	\$3,630.	0	-\$1,500.	Gratuities included	\$2,130.00
D	Stateroom 172 sq. ft	1	\$3,630.	0	-\$1,500.	Gratuities included	\$2,130.00
P	Stateroom 200 sq. ft	3	\$3,630.	\$1,799.	-\$1,500.	Gratuities included	\$3,929.00
B	Stateroom 200 sq. ft	2	\$3,630.	\$1,649.	-\$1,500.	Gratuities included	\$3,779.00
A	Stateroom 200 sq. ft	2/3	\$3,630.	\$1,749.	-\$1,500.	Gratuities included	\$3,879.00
S	Suite 300 sq. ft.	3	\$3,630.	\$2,999.	-\$1,500.	Gratuities included	\$5,129.00

STATEROOMS 16 ~ SUITES 67 ~ LENGTH 443ft ~ CREW 47



DECK PLAN

- | | | |
|---|----------------------|-------------------|
| 1 Sky Lounge | 7 Observation Lounge | 13 Lobby |
| 2 Navigation Bridge | 8 Panorama Bistro | 14 Elevator |
| 3 Sky Grill | 9 Panorama Lounge | 15 Club Lounge |
| 4 Whirlpool | 10 Bar | 16 Galley |
| 5 Premium Lounge
Chairs And Shade
Awnings | 11 Reception | 17 Dining Room |
| 6 Deck Game Area | 12 Adventure Center | 18 Fitness Center |

CATEGORIES

- Royal Suite** Royal Deck | Royal Suites
- Cat. P** Royal Deck | Panorama Suites
- Cat. A** Sapphire Deck Forward | Panorama Suites
- Cat. B** Sapphire Deck Aft | Panorama Suites
- Cat. D** Indigo Deck Aft | Deluxe Staterooms
- Cat. E** Indigo Deck Forward | Deluxe Staterooms



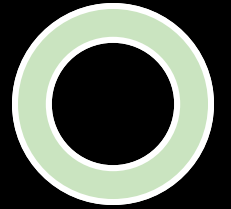
SHIP: Impression	CABINS	Danube Dreams Eastbound			BEGINS: Vilshofen April 2, 2026 ENDS: Budapest April 9, 2026		
Category	Category Description	Deck	BASE Fare	UPGRADE	Group DISCOUNT	Group OFFERING	<u>Group Fare Per Person</u>
E	Stateroom 172 sq. ft	1	\$3,630.	0	-\$1,500.	Gratuities included	\$2,130.00
D	Stateroom 172 sq. ft	1	\$3,630.	0	-\$1,500.	Gratuities included	\$2,130.00
P	Stateroom 200 sq. ft	3	\$3,630.	\$1,799.	-\$1,500.	Gratuities included	\$3,929.00
B	Stateroom 200 sq. ft	2	\$3,630.	\$1,649.	-\$1,500.	Gratuities included	\$3,779.00
A	Stateroom 200 sq. ft	2/3	\$3,630.	\$1,749.	-\$1,500.	Gratuities included	\$3,879.00
S	Suite 300 sq. ft.	3	\$3,630.	\$2,999.	-\$1,500.	Gratuities included	\$5,129.00

HOW TO BOOK THIS CRUISE

- **Call or email Reggie**
- **Deposit to secure your cabin if \$250 (non-refundable)**
 - **48-72 hours to pay deposit**
- **Passport Name**
- **Birthdate**
- **Credit card**
- **90 days prior to departure 90 days prior to departure**



HOW TO SIGN UP
or
FIND OUT MORE



Contact:

Reggie Daigneault

206 229-4790

reggiewine@icloud.com

<https://www.reggiewine.com/>

